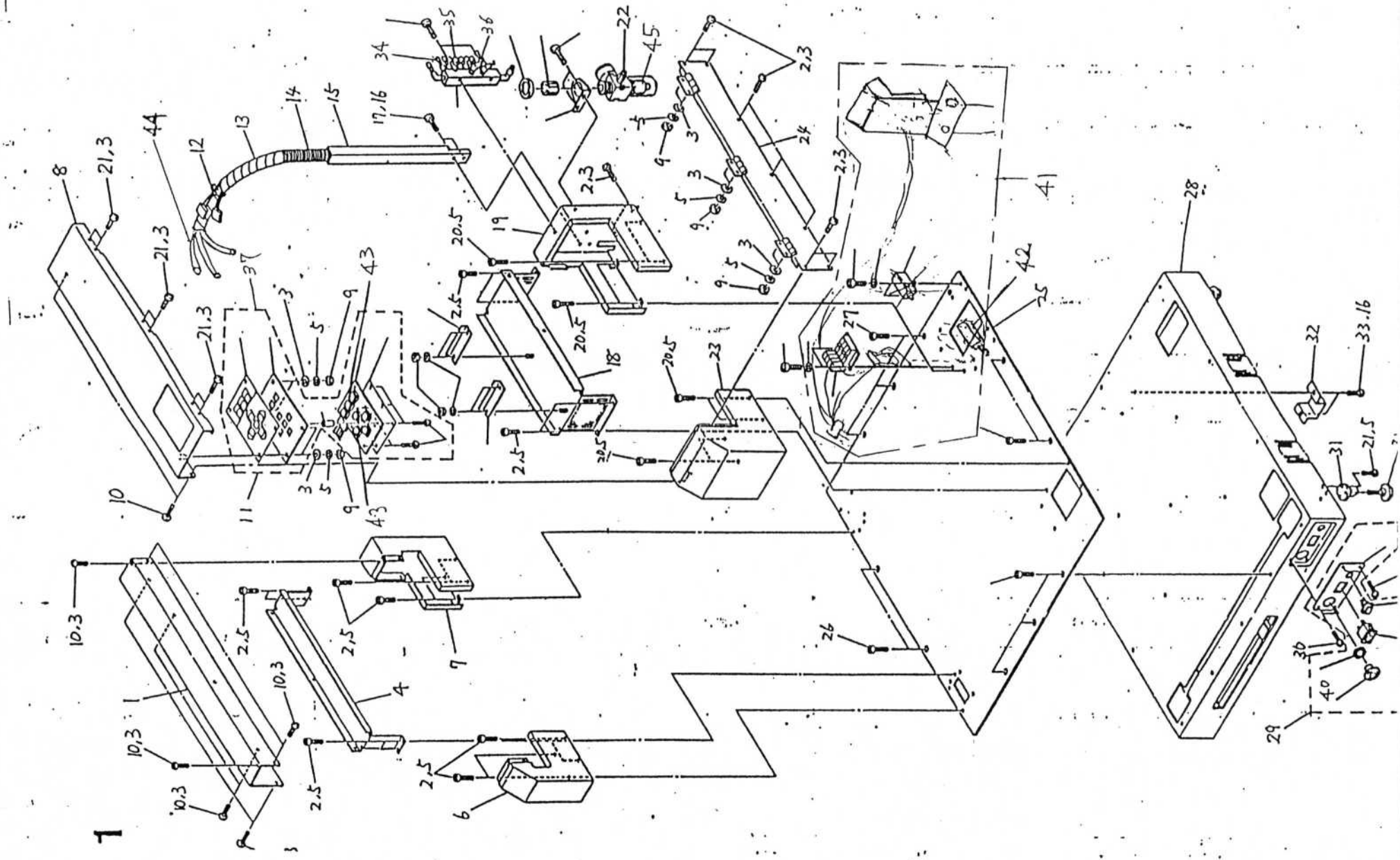
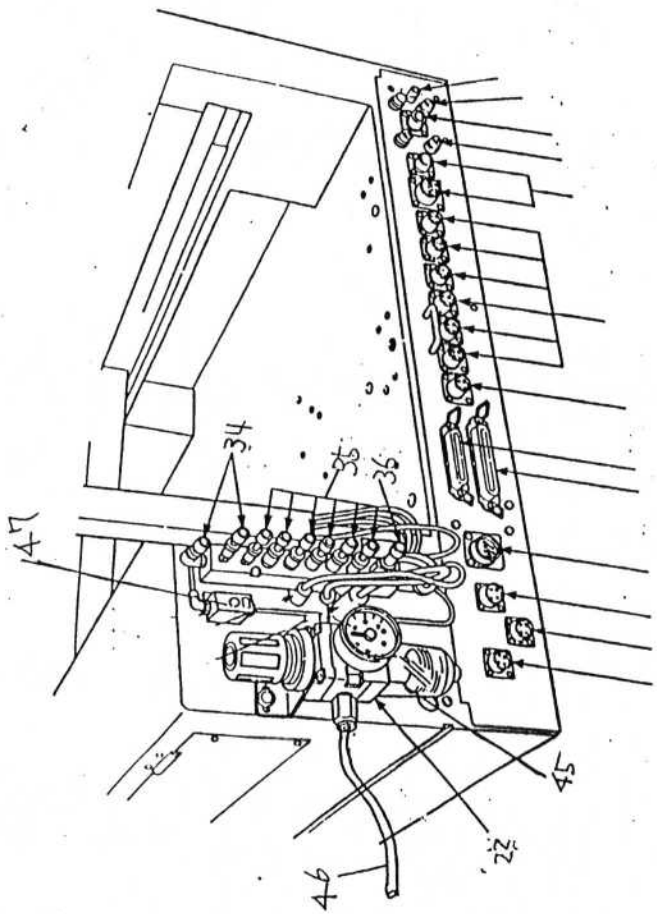


**JUKI**  
AUTOMATION SYSTEMS

**PLACEMAT 360**  
**PARTS LIST**

---





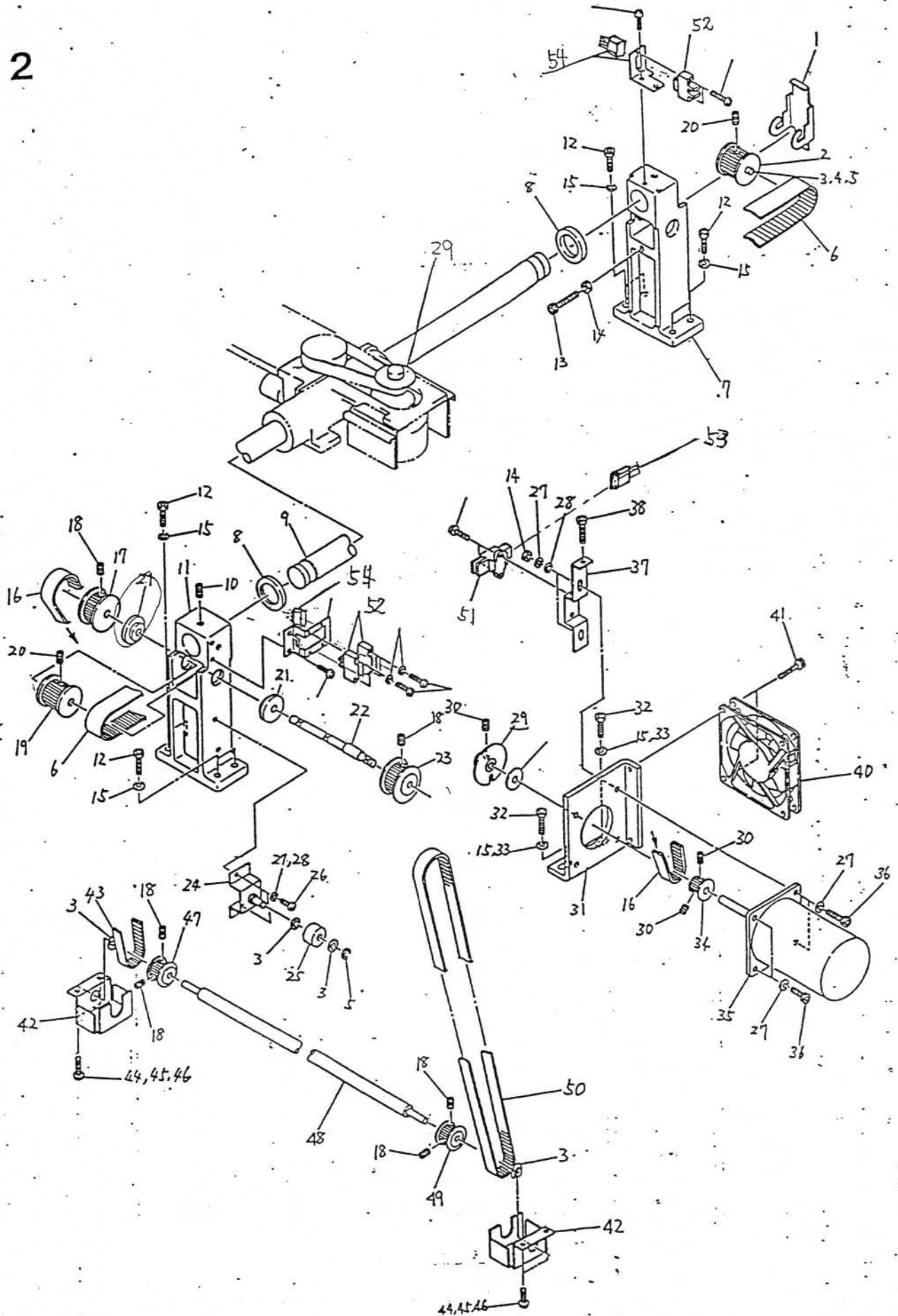
# 1. COVER UNIT

Ref.No.	Part No.	Part Name	Qty	Remarks
1	E1013760000	COVER LT.	1	
2	SM6030602TN	BOLT M3x6	25	
3	WP0320501SC	WASHER M3	21	
4	E1011760000	COVER LM	1	
5	WS0310002KH	SPRING WASHER M3	46	
6	E1010760000	COVER LF	1	
7	E1012760000	COVER LR	1	
8	E1009760000	COVER RT	1	
9	NM6030001SC	NUT M3	10	
10	SM6030402TN	BOLT M3x4	11	
11	E10167600A0	OPERATION PANEL ASM.	1	
12	E1021760000	TUBE WIRE	1	
13	E1022760000	SPIRAL TUBE	1	
14	E1027760000	SPIRAL PROTECTOR	1	
15	E1020760000	TUBE PORT	1	
16	WS0410002KH	SPRING WASHER M4	4	
17	SM6040602TN	BOLT M4x6	2	
18	E1006760000	COVER RH	1	
19	E1007760000	COVER RR	1	
20	SM6030602TP	BOLT M3x6	8	
21	SM6030802TP	BOLT M3x8	18	
22	E2604760000	FILTER REGULATOR	1	
23	E1005760000	COVER RF	1	
24	E1008760000	COVER RS	1	
25	E2028760000	BASE	1	
26	SM6040602TP	BOLT M4x6	17	
27	SM6041402TP	BOLT M4x14	3	
28	E1002760000	BASE BOX	1	
29	E96117600A0	POWER SWITCH WIRE ASM.	1	
30	SM0030601SC	SCREW M3x6	4	
31	E1024760000	LEVEL ADJUSTER	4	
32	E1026760000	HEIGHT FITNESS	1	
33	SM6040802TP	BOLT M4x8	2	

Ref NO	Part NO	Part Name
37	<del>E 860776000A</del> E 101676000A	OPERATION PANEL <del>PCB</del> ASM <sup>8/10 21K</sup> (at)
38	HA002170000	ILLUMINATED SEESAW SWITCH
39	HA002050000	ILLUMINATED PUSH BOTTON SWITCH
40	HA002040000	MUSHROOM TYPE SWITCH
41	E96377600A0	ヘッド "ハルジ" 束線組
42	E2603760000	EJECTER
43	HA002060000	テ"17" SW DP4-200B
34	E2620760000	AIR STOPPER 4
35	E2619760000	AIR STOPPER 6
36	E2618760000	AIR STOPPER 8
44	E2617760000	ホリワリソフ 42-7" (φ4 長さ 1850mm)
45	E2622760000	フィルタ-ILX=ト
46	E2615760000	ホリワリソフ 42-7" (φ8 長さ 250mm)
47	E9661760000	圧力センサー

37-101676000A 20.2.9/10

2



Y軸右後方異常音 必要交換部品

Y37<sup>0</sup>-11- E2038760000 /

E-11=9" RE0460000KO 5

A7(127" SB105000400 X

スリイ-17<sup>1</sup>→B E2058760000 X

Y37<sup>0</sup>11-1/2<sup>1</sup> E2046760000 /

## 2. X-Y TABLE UNIT (1)

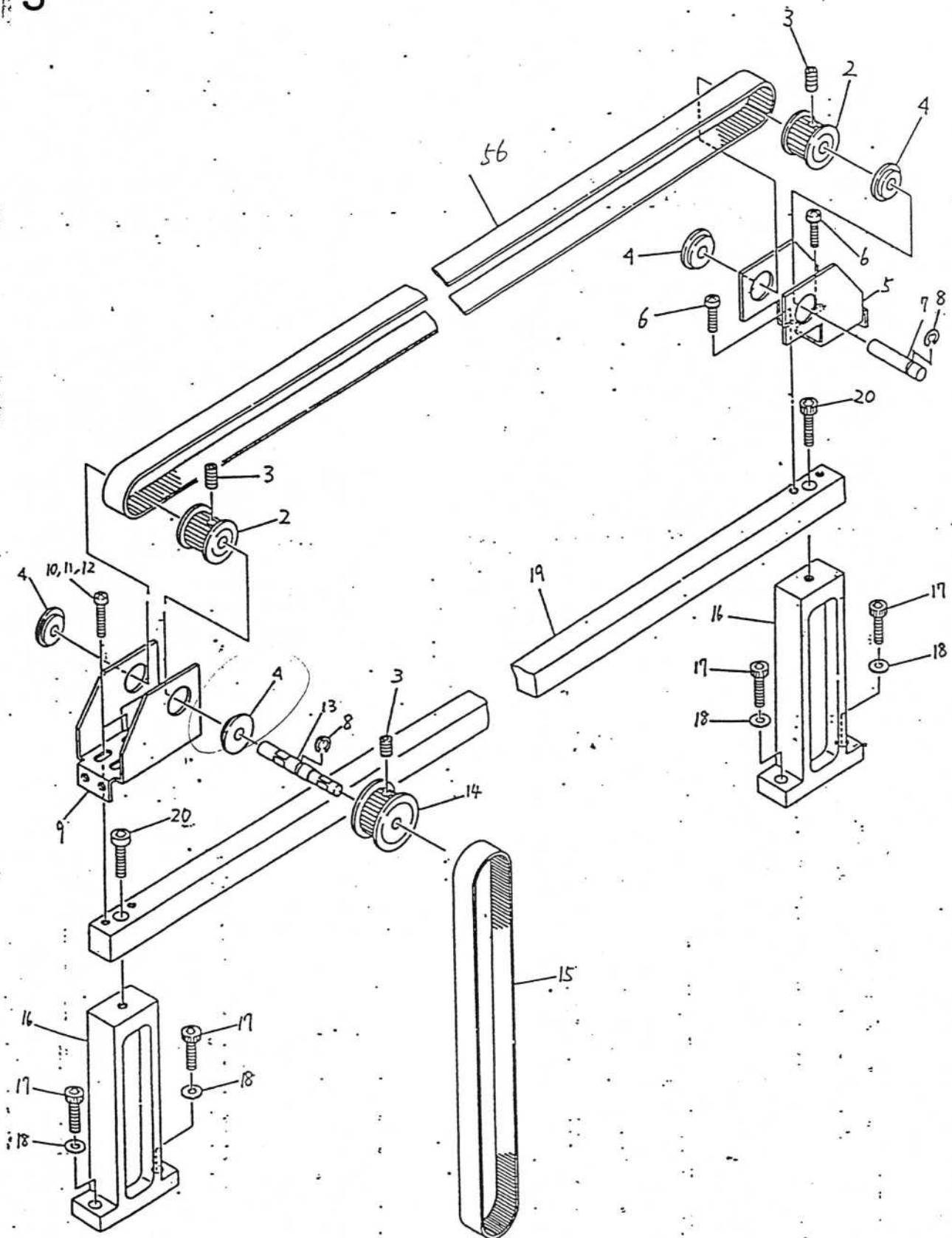
Ref.No.	Part No.	Part Name	Qty	Remarks
1	E2020760000	Y TENSIONER	1	
2	E2038760000	Y3 PULLEY	1	
3	SB105000400	BEARING	6	
4	E2046760000	Y3 PULLEY SHAFT	1	
5	RE0400000K0	E-SHAPED SNAP RING	2	
6	E2068760000	TIMING BELT YP	1	
7	E2076760000	STAND AR	1	
8	E2011760000	SLIDE STOPPER Y	2	
9	E2003760000	GUIDE SHAFT A	1	
10	SH8050602TP	SET SCREW M5x6	4	
11	E2001760000	STAND A	1	
12	SH6051402TP	BOLT M5x14	8	
13	SH6044552TP	BOLT	1	
14	NH6040001SC	NUT M4	3	
15	WS0510002KN	SPRING WASHER M5	10	
16	E2067760000	TIMING BELT YH	1	
17	E2036760000	Y1 PULLEY	1	
18	SH8040412TP	SET SCREW M4x4	8	
19	E2037760000	Y2 PULLEY	1	
20	SH8040482TP	SET SCREW M4x4	4	
21	SB106000 <sup>300</sup> <del>630</del>	BEARING	2	
22	E2045760000	Y1 PULLEY SHAFT	1	
23	E2041760000	J2 PULLEY	1	
24	E20217600A0	T PULLEY BRACKET ASH.	1	
25	E2042760000	T PULLEY	1	
26	SH6040602TP	BOLT M4x6	2	
27	WS0410002KN	SPRING WASHER M4	8	
28	WP0430800SC	WASHER M4	4	
29	E20297600A0	ENCODER ASH.	1	
30	SH8030302TP	SET SCREW M3x3	4	
31	E2018760000	MOTOR BRACKET	1	
32	SH6051202TP	BOLT M5x12	2	
33	WP0531001SC	WASHER M5	2	
34	E2035760000	Y MOTOR PULLEY	1	
35	E96147600A0	Y AXIS MOTOR ASH.	1	
36	SH6041002TP	BOLT M4x10	2	
37	E2027760000	E SENSOR ADJUSTER Y	1	
38	SH8030602TP	SET SCREW M3x6	1	



## 2. X-Y TABLE UNIT (1)

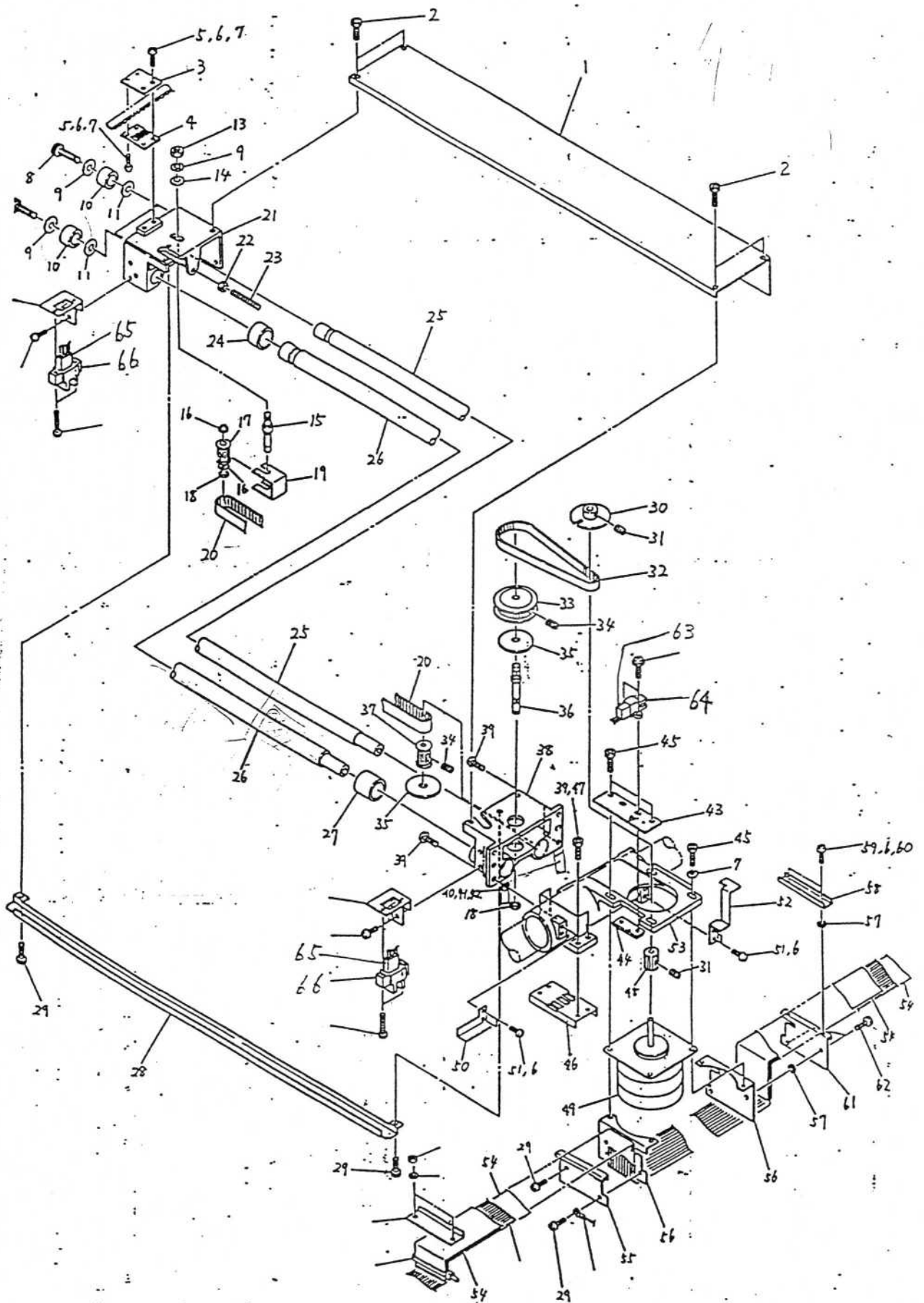
Ref.No.	Part No.	Part Name	Qty	Remarks
39	SM6042002TP	BOLT M4x20	2	
40	E96387600A0	FAN MOTOR ASM.	1	
41	SL4032591SC	SCREW M3x25	2	
42	E2051760000	UNDER BRACKET	2	
43	E2070760000	TIMING BELT JL	1	
44	SM6031002TP	BOLT M3x10	4	
45	VS0310002KN	SPRING WASHER M3	4	
46	VP0320501SC	WASHER M3	4	
47	E2040760000	J1 PULLEY	2	
48	E2048760000	J PULLEY SHAFT	1	
49	E2039760000	Y4 PULLEY	1	
50	E2069760000	TIMING BELT JR	1	
51	HD000360000	PHOTO INTERRUPTER (3P)	1	
52	HD00035000A	- " - (4P)	1	
53	HD000360010	イナ-う70トゴネ79	1	
54	HD000120010	- " - (4P)		
55	E2091760000	TIMING BELT JP		

3



### 3. X-Y TABLE UNIT (2)

Ref.No.	Part No.	Part Name	Qty	Remarks
1	E2071760000	TIMING BELT JP	1	
2	E2041760000	J2 PULLEY	2	
3	SH8040412TP	SET SCREW M4x4	6	
4	SB106000300	BEARING	4	
5	E2077760000	UPPER BRACKET R	1	
6	SH6041002TP	BOLT M4x10	2	
7	E2050760000	J2 PULLEY SHAFT	1	
8	RE0500000K0	E-SHAPED SNAP RING	2	
9	E2052760000	UPPER BRACKET	1	
10	SH6040802TP	BOLT M4x8	4	
11	WS0410002KN	SPRING WASHER M4	4	
12	WP0430801SC	WASHER M4	4	
13	E2049760000	J1 PULLEY SHAFT	1	
14	E2040760000	J1 PULLEY	1	
15	E2070760000	TIMING BELT JL	1	
16	E2002760000	STAND B	2	
17	SH6051402TP	BOLT M5x14	4	
18	WS0510002KN	SPRING WASHER M5	4	
19	E2006760000	GUIDE BAR	1	
20	SH6051402TP	BOLT M5x14	2	

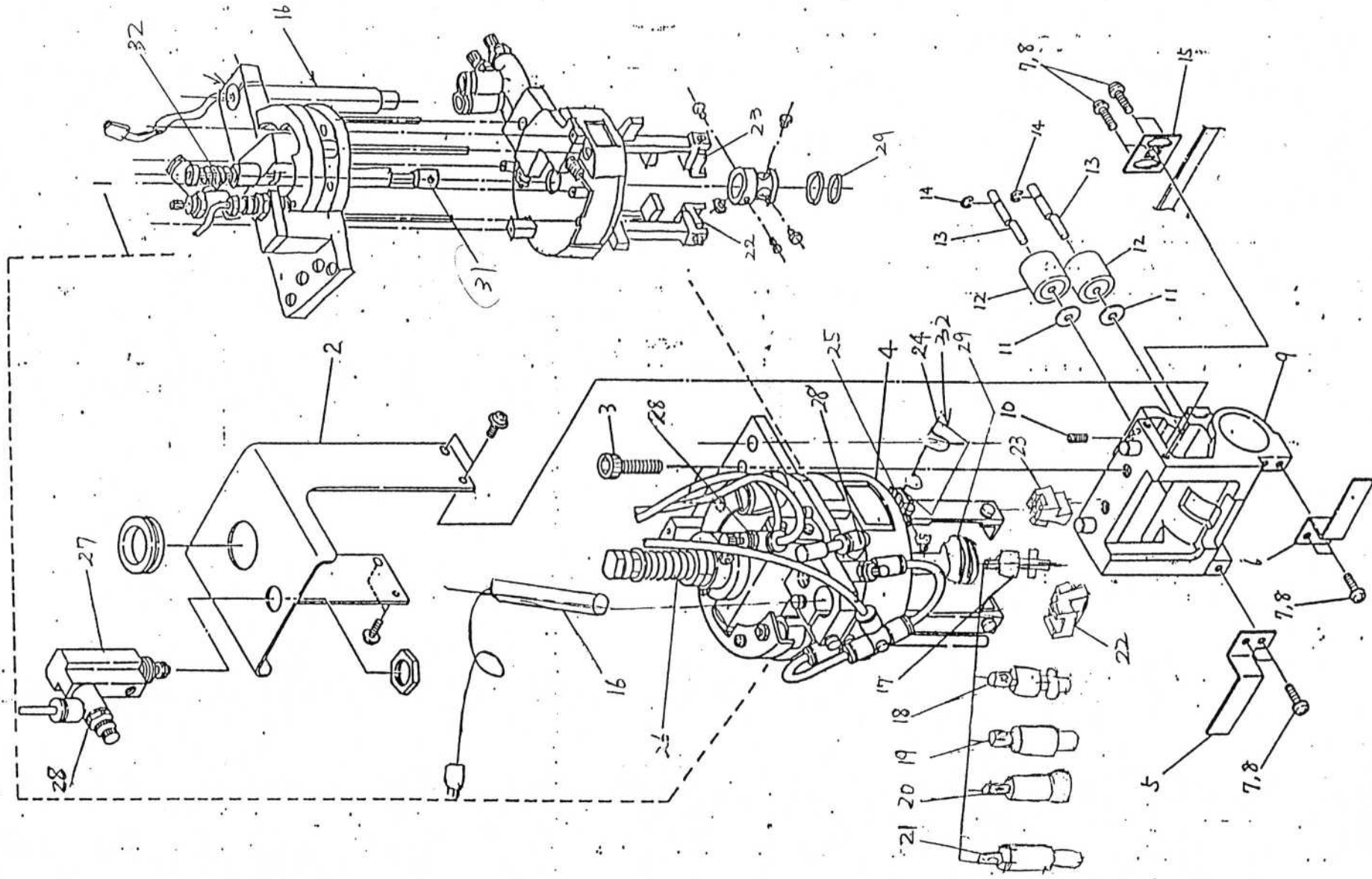


## 4. X-Y TABLE UNIT (3)

Ref.No.	Part No.	Part Name	Qty	Remarks
1	E1014760000	BAIL COVER	1	
2	SM6030602TN	BOLT M3x6	6	
3	E2017760000	J BELT BRACKET	1	
4	E2016760000	J BELT HOLDER	1	
5	SM6030802TP	BOLT M3x8	4	
6	WS0310002KN	SPRING WASHER M3	10	
7	WP0320501SC	WASHER M3	6	
8	SM6052002TP	BOLT M5x20	3	
9	WS0510002KN	SPRING WASHER M5	5	
10	SB105000500	BEARING	3	
11	E2058760000	SLIDER WASHER B	3	
12	E2080760000	SENSOR BACKET XL	1	
13	NM6050001SC	NUT M5	1	
14	WP0531001SC	WASHER M5	1	
15	E2044760000	X2 PULLEY SHAFT	1	
16	SB105000400	BEARING	2	
17	E2034760000	X3 PULLEY	1	
18	RE0400000K0	E-SHAPED SNAP RING	2	
19	E2019760000	X TENSIONER	1	
20	E2073760000	TIMING BELT XP	1	
21	E2010760000	SHAFT BRACKET B	1	
22	NM6040001SC	NUT M4	1	
23	SH8041402TP	SET SCREW M4x14	1	
24	E2012760000	SLIDE STOPPER X2	1	
25	E2004760000	GUIDE SHAFT B	1	
26	E2005760000	GUIDE SHAFT C	1	
27	E2013760000	SLIDE STOPPER X1	1	
28	E2060760000	WIRING DUCT	1	
29	SL4030681SC	SCREW M3x6	4	
30	E20297600A0	ENCODER ASM.	1	
31	SH8030302TP	SET SCREW M3x3	4	
32	E2072760000	TIMING BELT XM	1	
33	E2032760000	X1 PULLEY	1	
34	SH8040412TP	SET SCREW M4x4	4	
35	SB106000300	BEARING	2	
36	E2043760000	X1 PULLEY SHAFT	1	
37	E2033760000	X2 PULLEY	1	
38	E2009760000	SHAFT BRACKET A	1	

# 4. X-Y TABLE UNIT (3)

Ref.No.	Part No.	Part Name	Qty	Remarks
39	SM6041002TP	BOLT M4x10	8	
40	E2061760000	SHIM A	1	
41	E2062760000	SHIM B	1	
42	E2063760000	SHIM C	3	
43	E2026760000	E SENSOR ADJUSTER X1	1	
44	E2064760000	E SENSOR ADJUSTER X2	1	
45	SM6041602TP	BOLT M4x16	4	
46	E2015760000	Y BELT HOLDER	1	
47	VS0410002KN	SPRING WASHER M4	4	
48	E2031760000	X MOTOR PULLEY	1	
49	E96137600A0	X AXIS MOTOR ASM.	1	
50	E2024760000	SENSOR PLATE XF	1	
51	SM4030501SN	SCREW M3x5	2	
52	E2081760000	SENSOR PLATE YR	1	
53	E20077600A0	SLIDE TABLE A ASM.	1	
54	E2082760000	FLAT CABLE COVER	2	
55	E2054760000	CABLE BRACKET B	1	
56	E2053760000	CABLE BRACKET A	2	
57	E2086760000	FC BRACKET SPACER	4	
58	E2084760000	CABLE BRACKET D	1	
59	SM4030801SC	SCREW M3x8	2	
60	WP0320500SC	WASHER M3	2	
61	E2083760000	CABLE BRACKET C	1	
62	SL4030891SC	SCREW M3x8	2	
63	HD000360010	129-		
64	HD000360000			
65	HD000120010			
66	HD00035000A			



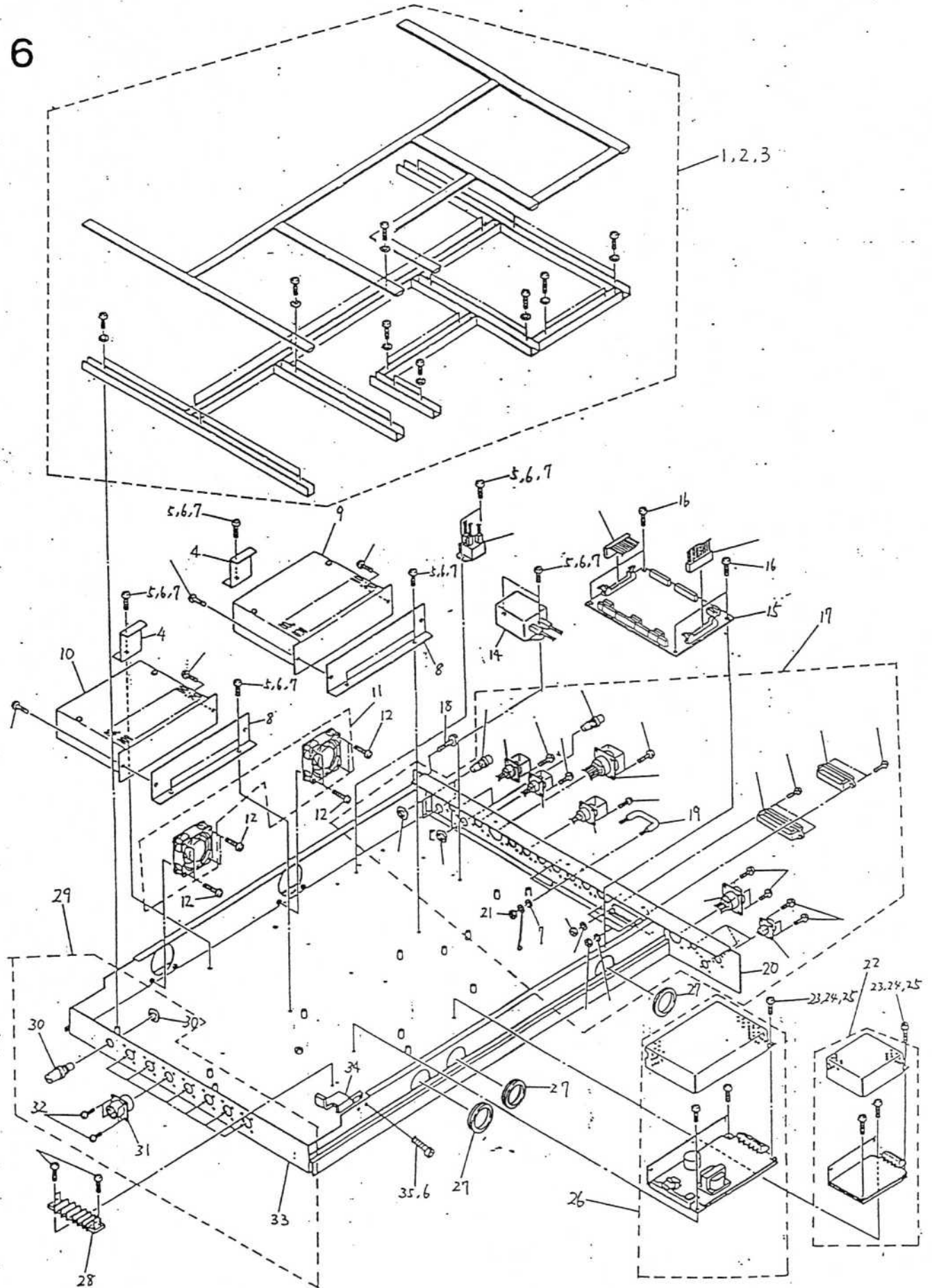
# 5. HEAD UNIT

Ref.No.	Part No.	Part Name	Qty	Remarks
1	E23007600A0	HEAD ASH.	1	
2	E2314760000	KJ CYLINDER BRACKET	1	
3	SM6051002TP	BOLT M5x10	2	
4	E46007600A0	CENTERING CHUCK ASH.	1	
5	E2025760000	SENSOR PLATE XL	1	
6	E2055760000	SENSOR PLATE XR	1	
7	SM4030501SN	SCREW M3x5	8	
8	WS0310002KN	SPRING WASHER M3	8	
9	E20087600A0	SLIDE TABLE B ASH.	1	
10	SM8030302TP	SET SCREW M3x3	2	
11	E2057760000	SLIDER WASHER A	2	
12	SB103000100	BEARING	2	
13	E2078760000	SLIDER SHAFT U	2	
14	RE0200000K0	E-SHAPED SNAP RING	2	
15	E2014760000	X BELT HOLDER	1	



NO	Ref. NO	Part No	Part Name
1	16	E 96477600A0	TS 束線組
2	17	E 2319760000	TYPE OF HEAD (Bit) 1
3	18	E 2322760000	TYPE OF HEAD (Bit) 2
4	19	E 2396760000	TYPE OF HEAD (Bit) 3
5	20	E 2397760000	TYPE OF HEAD (Bit) 4
6	21	E 2398760000	TYPE OF HEAD (Bit) 5
7	22	E 4629760000	FINGER B
8	23	E 4628760000	FINGER A
9	24	E 4632760000	ヘッドハイトツム4B( $\sigma=0.1$ )
10	25	E 2311760000	フニツ
11	26	E 2308760000	スライド SH スリッパ
12	27	E 2351760000	ピンツリ
13	28	E 2353760000	スライド コントローラ (AS 12/F)
14	29	R0098240100	リニツ
15	32	E 2309760000	スライド ツヤツ
16	31	E 2306760000	フニツ ツヤツ
	32	E 4640760000	ヘッドハイトツム C (厚いの)

6

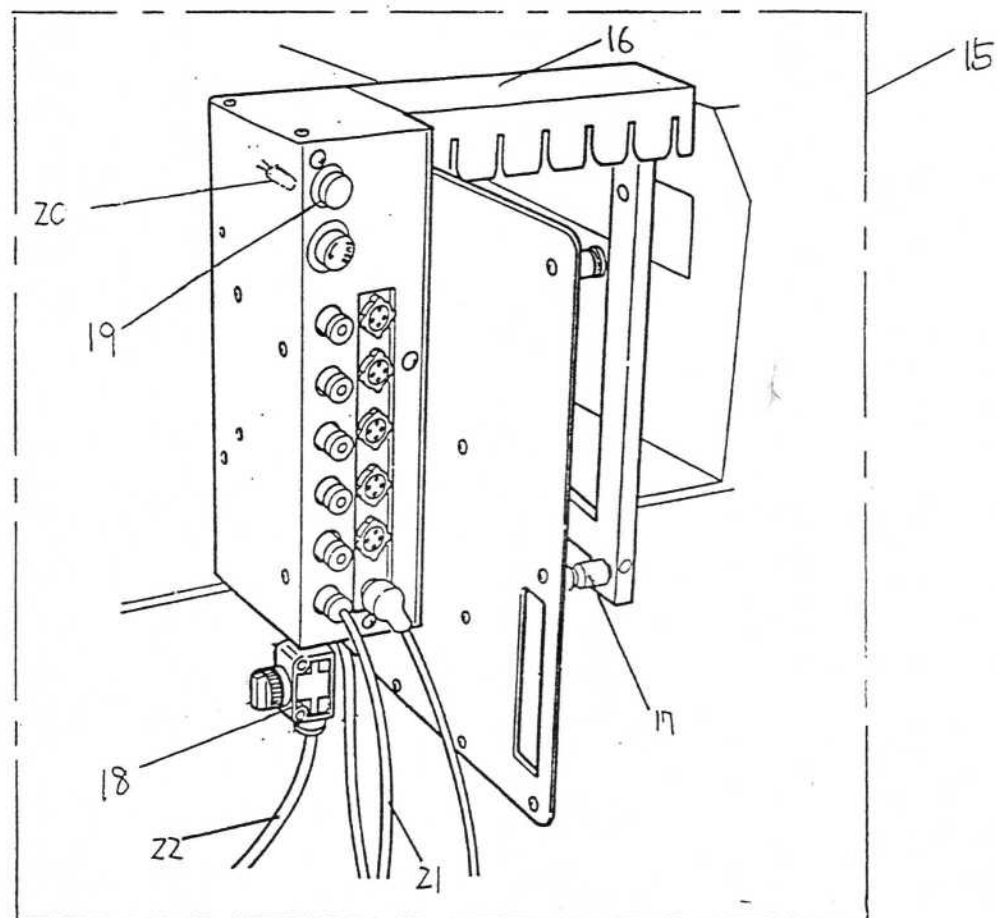
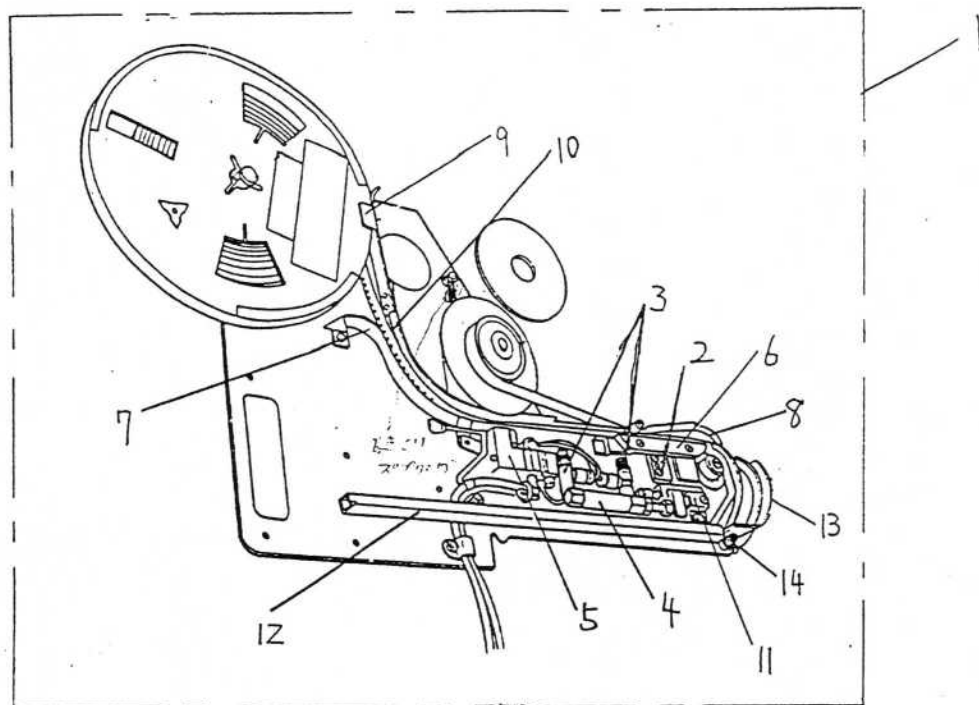


## 6. PWB WIRING UNIT

Ref.No.	Part No.	Part Name	Qty	Remarks
1	E96847600A0	WIRING DUCT ASM.	1	
2	SL4030891SC	SCREW M3x8	20	
3	WP0531000SC	WASHER M5	20	
4	E1019760000	DRIVER HILDER B	2	
5	SH4040501SH	SCREW M4x5	10	
6	WS0410002KN	SPRING WASHER M4	13	
7	VP0430800SC	WASHER M4	12	
8	E1018760000	DRIVER HOLDER A	2	
9	HM000500010	MOTOR DRIVER (1.4A)	1	
10	HM000510010	MOTOR DRIVER (0.75A)	1	
11	E96237600A0	FAN WIRE ASM.	1	
12	SL4042591SC	SCREW M4x25	8	
13	HB000450000	POWER RELAY	1	
14	HN000830000	NOISE FILTER	1	
15	E86027600A0	I/O PWB ASM.	1	
16	SL4031081SC	SCREW M3x10	4	
17	E96347600A0	REAR PANEL WIRE ASM.	1	
18	SM0030601SC	SCREW M3x6	7	
19	E1023760000	PANEL HANDLE	1	
20	E1004760000	PS DRAW PLATE	1	
21	NH6040001SC	NUT M4	2	
22	HX002130000	POWER SUPPLY(+5V 3A)	1	
23	SH4030501SH	SCREW M3x5	4	
24	WS0310002KN	SPRING WASHER M3	4	
25	WP0320500SC	WASHER M3	4	
26	HX002140000	POWER SUPPLY(+24V 2.1A)	1	
27	EA9027B0000	GROMMET	3	
28	HK019250060	TERMINAL BLOCK	1	
29	E96357600A0	FRONT PANEL WIRE ASM.	1	
30	HF0047150P0	FUSE HOLDER	1	
31	HK035320030	RECEPTACLE 3P	7	
32	SH4030601SH	SCREW M3x6	28	
33	E1003760000	PS DRAW	1	
34	E1017760000	DRAW STOPPER	1	
35	SH6040602TP	BOLT M4x6	1	

No	Ref No	Part No	Part Name
1.	9.	HM000500010	MOTOR DRIVER (1.4A)
2.	10	HM000510010	MOTOR DRIVER (0.75A)
3.	11	E96237600A0	FAN WIRE ASM 12
4.	13	HB000450000	POWER RELAY
5.	14	HN000830000	NOISE FILTER
6.	15	E86027600A0	I/O PWB ASM
7.	22	HX002130000	POWER SUPPLY (+5V 3A)
8.	26	HX002140000	POWER SUPPLY (+24V.2.1A)

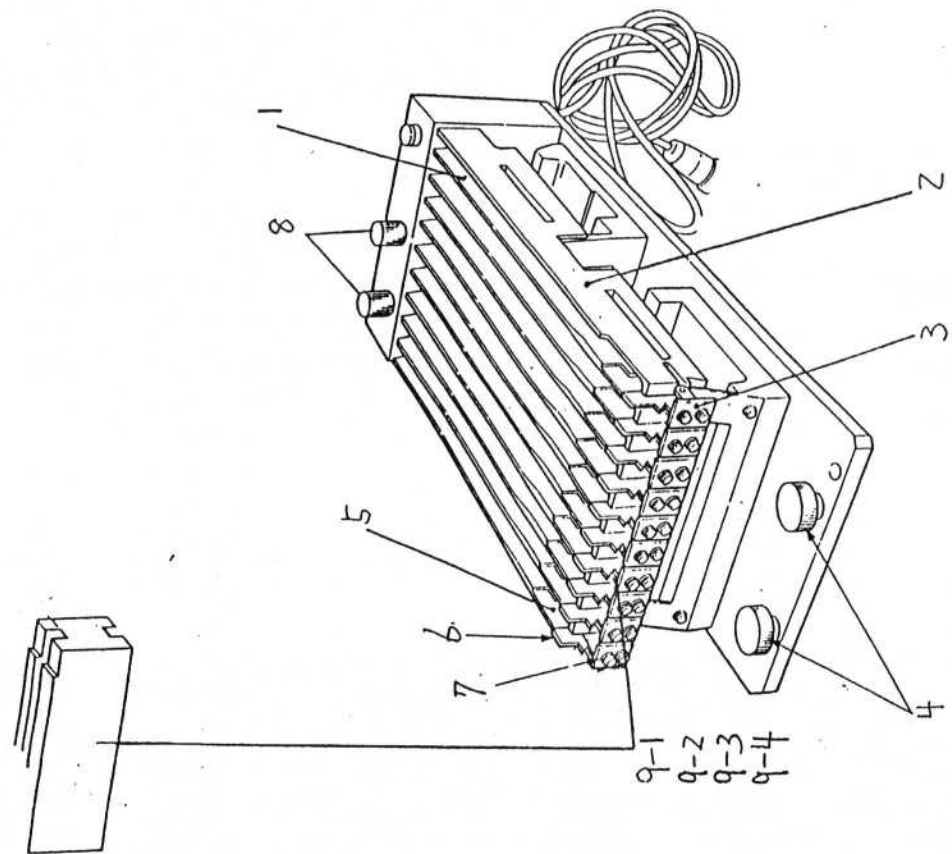
# TAPE FEEDER



TAPE FEEDER

NO. /

Ref No	品番	R/N	品名		
1	E3201760030 <sup>B</sup>		TAPE CASSETTE ASM (8/12mm)		1
2	HA002100000		MICRO SWITCH		2
3	E3273760000		スピードコントロー	(AS 1200F)	3
4	E3272760000		イア-ツリダ-		4
5	E96467600A0		ソリッドビルド		5
6	E3203760000		調整ジョルト		6
7	E3256760000		入ロカイト-2		7
8	E3207760000		7-7カバー		8
9	E3247760000		板バネ		9
10	E3246760000		入ロカイト-1		10
11	E3211760000		切替ブロック		11
12	E3222760000		排出ガイド		12
13	E3251760000		フロントカバー		13
14	E3244760000		フロントカバー Spring		14
15	E32307600A0 <sup>B</sup>		TAPE CASSETTE PACK ASM		15
16	E3241760000		位置決カバー		16
17	E3236760000		位置決シャフト		17
18	E3275760000		ハンドビルド		18
19	HA002090013		Switch Button (white)		19
20	HA002090020		Switch Neon Bulb		20
21	E2617760000		φ4 5-7"		21
22	E2616760000		φ6 5-7"		22
					23
					24
					25
					26
					27
					28
					29
					30



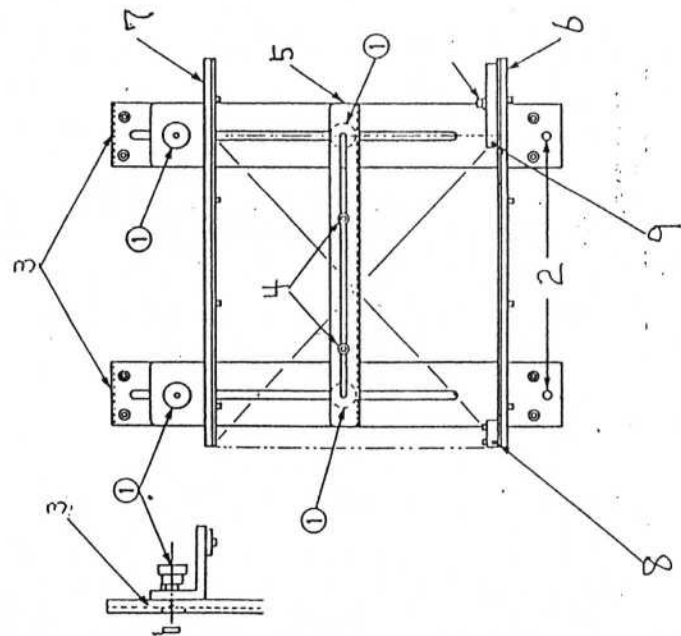
川三ア7イ-ダ

NO. /

	品番	R/N	品名		
1	E3506760000		LVIB		1
2	E3505760000		LVIA		2
3	E3514760000		先端カパー		3
4	E3237760000		バンド17°	2	4
5	E3512760000		サイドホルト		5
6	E3513760000		ストッパー		6
7			Screw M2.6X6		7
8	HX002160000		ツミ		8
9-1	E3507760000		整列7°ロツ7A		9
9-2	E3508760000		" B		10
9-3	E3509760000		" C		11
9-4	E3511760000		" D		12
					13
					14
					15
					16
					17
					18
					19
					20
					21
					22
					23
					24
					25
					26
					27
					28
					29
					30



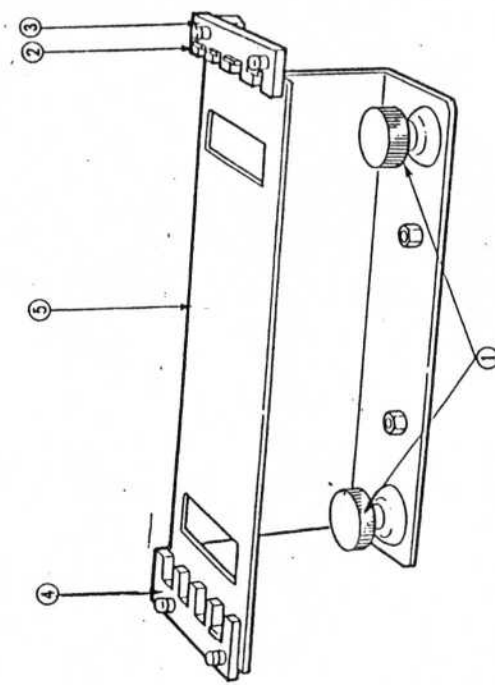
No.	Ref.No	Part No	Part Name
1.	1	E 4897760000	SE BELT
2.	2	H D 000370000	光電スイッチ
3.	3	H D 000410000	抗散反射型セー
4.	4	E 3507760000	整列フロッグ A
5.	5	E 3508760000	整列フロッグ B
6.	6	E 3509760000	整列フロッグ C
7.	7	E 3511760000	整列フロッグ E.
8.	8	E 35177600AD	コイル等.



# PCB受台組

NO. /

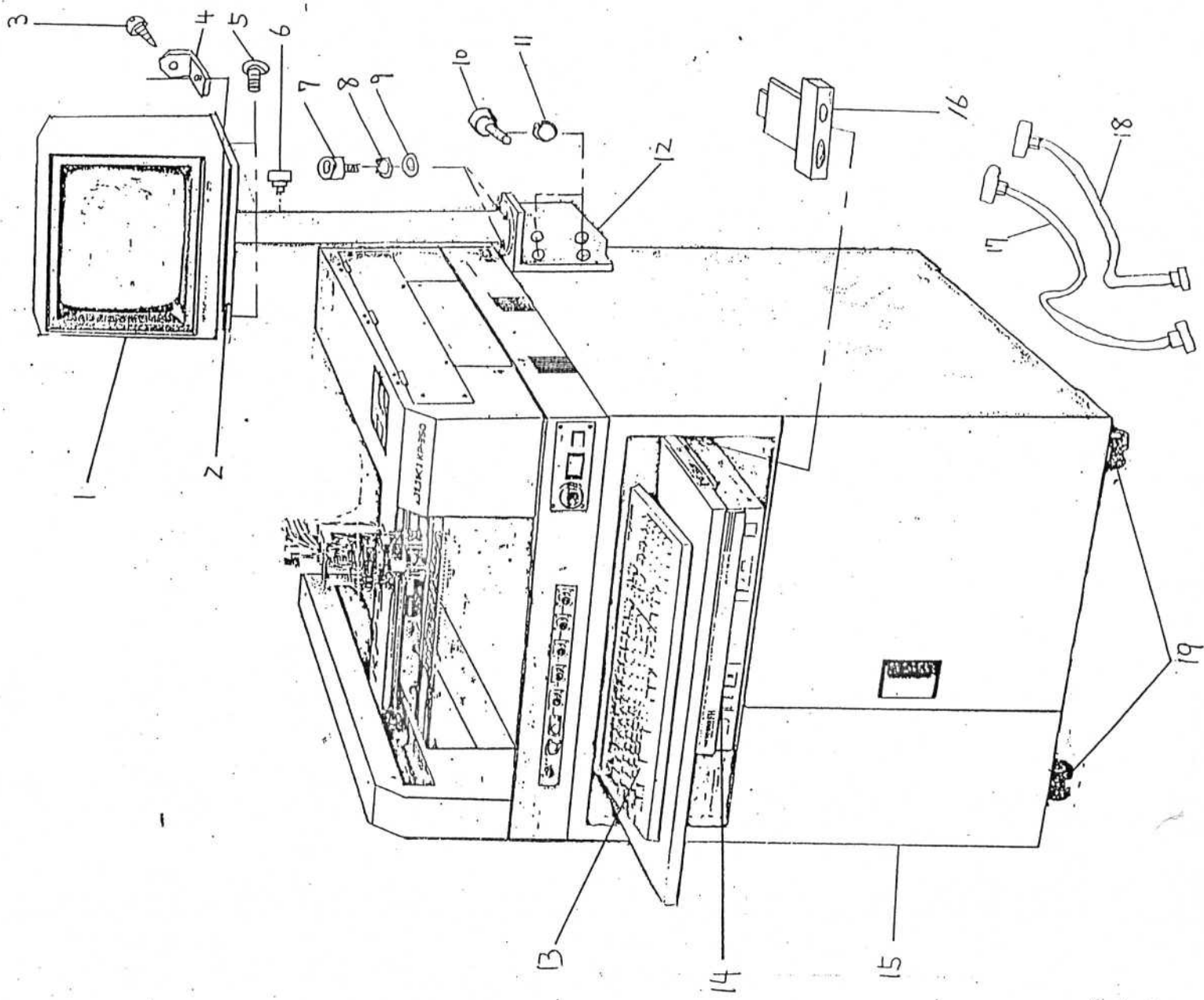
R/N	品番	品名	数量	
1	E3237760000	ハンド17"	4	
2	E3012760000	位置決めセンサ	2	
3	E3008760000	PCB受台ベース	2	
4	E3007760000	PCB受台センタ	2	
5	E3011760000	PCB受台センタ-ブレード	1	
6	E3009760000	PCB受台ブレードF	1	
7	E3010760000	ブレード B	1	
8		PCB受台センサA7ミ		
9		B7ミ		
10				
11				
12				
13				
14				
15				
16				
17				
18				
19				
20				
21				
22				
23				
24				
25				
26				
27				
28				
29				
30				



横型マガジントライユニット

NO. /

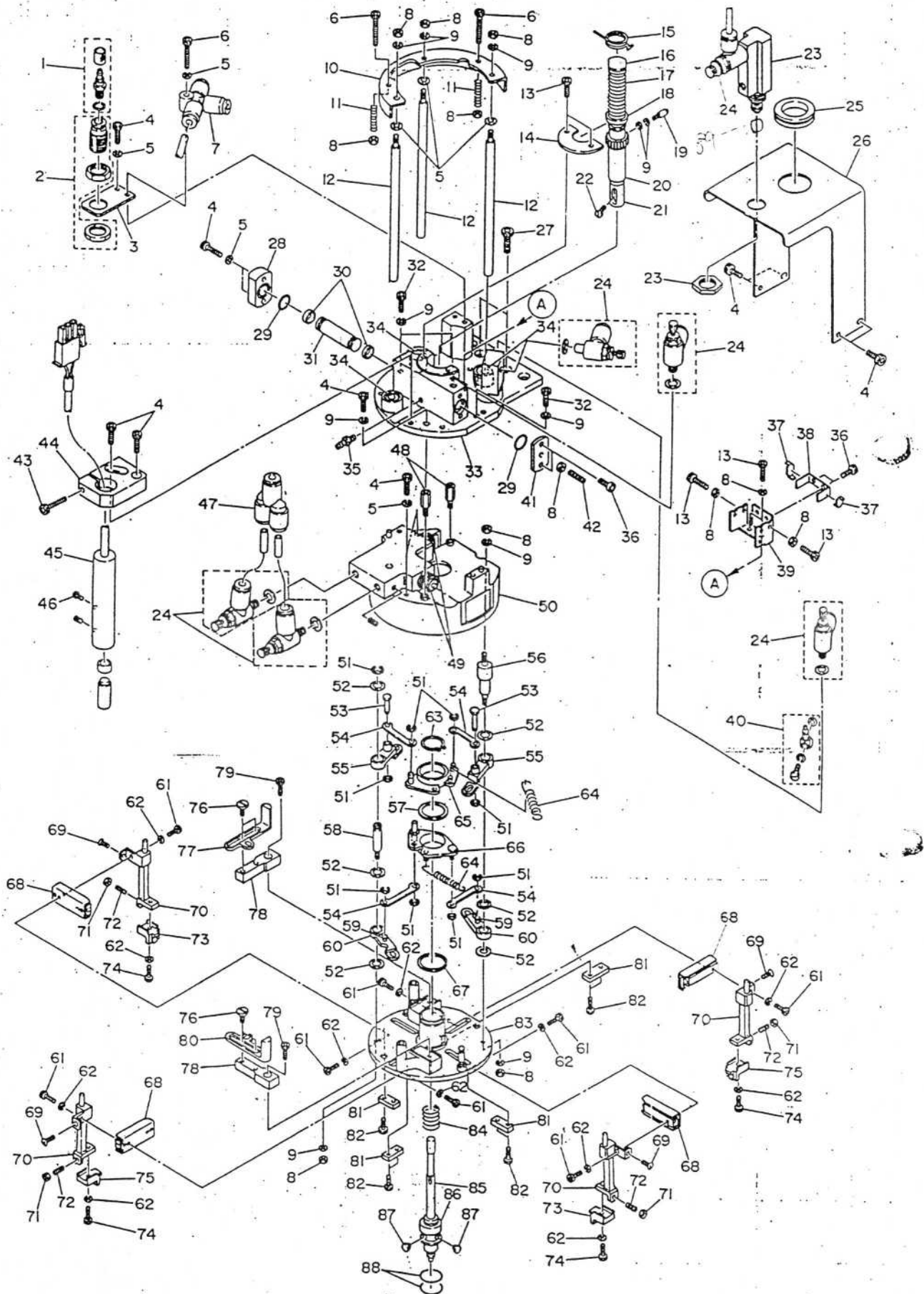
	品番	R/N	品名		
1	E3237760000		ハンド / 7"	2	1
2					2
3					3
4					4
5					5
					6
					7
					8
					9
					10
					11
					12
					13
					14
					15
					16
					17
					18
					19
					20
					21
					22
					23
					24
					25
					26
					27
					28
					29
					30



CRT

NO. /

	品番	R/N	品名		
1	E96047600A0		DISPLAY		1
2	E1507760000		CRT 7"-ス		2
3			Screw	2	3
4	E1508760000		CRT 7"1/2"	2	4
5	S14040691SC		Screw	2	5
6	E3237760000		1/2" x 1/4"	1	6
7	S M6052002TP		Screw		7
8	W S0510002KW		Spring 7x7x4		8
9	W P0531001SC		7x7x4		9
10	S M6061602TN		六角付ボルト		10
11	W S0610002KW		Spring 7x7x4		11
12	E1504760000		ボ-1L7"-ス		12
13			Key Board		13
14	E9603760AA0		Personal Computer		14
15					15
16	E86017600A0		EXPANSION PCB ASM		16
17			1.5"-7x7x4-7x4	1	17
18			" - "	1	18
19			ネジ7x4-	4	19
					20
					21
					22
					23
					24
					25
					26
					27
					28
					29





REF. NO.	NOTE	PART NO.	DESCRIPTION	AMT.
1		E2354-760-000	HOSE NIPPLE	1
2		E2352-760-000	PIN CYLINDER	1
3		E2314-760-000	KJ CYLINDER BRACKET	1
4		SM-6030802-TP	SCREW	11
5		WP-0320501-SC	WASHER M3	8
6		SM-6032002-TP	SCREW M3X0.5 L=20	4
7		PJ-3050400-01	TEE UNION	1
8		NM-6030001-SC	NUT M3	15
9		WS-0310002-KN	SPRING WASHER M3	12
10		E2304-760-000	KNOCK JOINT	1
11		E2329-760-000	KNOCK SPRING	2
12		E2317-760-000	KNOCK ROD	1
13		SM-6030602-TP	SCREW M3X0.5 L=6	8
14		E2316-760-000	ROTARY SHAFT WASHER	1
15		E2310-760-000	HR SPRING	1
16		E2393-760-000	KNOCK CAP	1
17		E2326-760-000	H SLIDE SPRING B	1
18		E2390-760-000	HEAD SPRING SUPPORT	1
19		E2307-760-000	R SPRING PORT	1
20		E2305-760-000	ROTARY SHAFT	1
21		E2309-760-000	SLIDE SHAFT	1
22		E2311-760-000	DUMPER SCREW	1
23		E2351-760-000	PIN CYLINDER	1
24		E2353-760-000	SPEED CONTROLLER	6
25		E2383-760-000	GROMMET	1
26		E2312-760-000	BD CYRINDER BRACKET	1
27		SM-6051002-TP	SCREW M5 L=10	2
28		E2395-760-000	HEAD COVER AN	1
29		E2384-760-000	RUBBER RING	2
30		E2382-760-000	PACKING	2
31		E2313-760-000	R RACK	1
32		SM-6031002-TP	HEXAGONAL BOLT M3 X 10	3
33		E2301-760-0A0	HEAD BASE ASM.	1
34		E2381-760-000	BALL BUSHING	1
35		E2610-760-000	BARB COUPLING	1
36		SM-6030402-TP	BOLT M3X4	3
37		E2391-760-000	HEAD SPRING PUSHER	2
38		E2386-760-000	HEAD SPRING	1
39		E2389-760-000	HEAD SPRING BRACKET	1
40		E3276-760-000	BARB ELBOW	1
41		E2303-760-000	HEAD COVER B	1
42		SM-8031612-TP	SET SCREW M3X16	1
43		SM-6041602-TP	SCREW M4X0.7 L=16	1
44		E4691-760-000	SPOT BRACKET	1
45		E9647-760-0A0	TS CABLE ASM.	1
46		SM-6030802-TP	SCREW	2
47		PJ-3080400-02	QUICK COUPLING	1
48		E4603-760-000	STAY BOLT	2
49		E4651-760-000	PIN CYLINDER	2
50		E4601-760-000	CYLINDER BLOCK	1
51		RE-0200000-K0	E-RING	8
52		E4619-760-000	SPACER	6
53		E4620-760-000	LINK PIN A	2
54		E4622-760-000	LINK	4
55		E4616-760-000	LEVER B	2
56		E4618-760-000	LEVER SHAFT B	1
57		E4605-760-000	ROTARY SPACER U	1
58		E4617-760-000	LEVER SHAFT A	1
59		E4621-760-000	LINK PIN B	2

REF. NO.	NOTE	PART NO.	DESCRIPTION	AMT.
60		E4615-760-000	LEVER A	2
61		SM-6020552-TP	SCREW	12
62		WS-0210002-KN	SPRING WASHER M2	16
63		RC-1400001-KP	C-RING	1
64		E4614-760-000	CHUCK SPRING	2
65		E4606-760-0A0	ROTARY PLATE U ASM.	1
66		E4607-760-0A0	ROTARY PLATE D ASM.	1
67		E4630-760-000	ROTARY SPACER D	1
68		E4650-760-000	BALL SLIDER	4
69		SM-1970451-SN	SCREW M1.7X3.5	4
70		<del>E4627-760-0A0</del>	ARM ASM.	4
71		NM-6030001-SC	NUT M3	4
72		SM-8020502-TP	SET SCREW M2X5	4
73		E4628-760-000	FINGER A	2
74		SM-6020852-TP	BOLT M2X8	4
75		E4629-760-000	FINGER B	2
76		E4626-760-000	SCREW	2
77		E4623-760-000	SLIDE LINK A	1
78		E4625-760-000	RAIL	2
79		SM-6860552-TP	SCREW M2.6X0.45 L=5	2
80		E4624-760-000	SLIDE LINK B	1
81		E4625-760-000	RAIL	4
82		SM-6021252-TP	BOLT M2X12	8
83		E4602-760-0A0	CHUCK BASE ASM.	1
84		E2325-760-000	H SLIDE SPRING A	1
85		E2306-760-000	DUMPER SHAFT	1
86		E2327-760-000	PIN HOLDER	1
87		E2328-760-000	BIT SUPPORT PIN	2
88		RO-0982401-00	RUBBER RING	2

# JUKI

JUKI CORPORATION  
 2-1, 8-CHOME, KOKURYO-CHO.  
 CHOFU-CITY, TOKYO 182, JAPAN  
 FAX : 03-430-4953  
 TELEX : 03-242-4343 JUKI J